

CR Clarke

Strip Heaters

to match your
exact needs



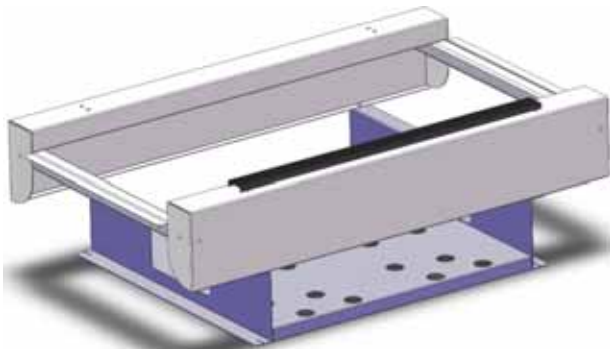
Today's technology for plastics

The new range of single/double modular Strip Heaters from CR Clarke provide quick setup, flexibility and high-speed processing for efficient plastic fabrication.

The range is completely modular, and is built up to customer requirements in the following way:

Select a Base Frame

Base Frames are available for working lengths of 600mm, 1000mm, 1500mm and 2000mm, suitable for the majority of small to medium fabrication requirements. Base frames come with work tables at the front and rear, fitted with material stops and calibrations for easy setting of heater beam position. The standard base frame allows a maximum distance between heater beams of 300mm, with the extended version giving up to a full 1000mm maximum bend centres.



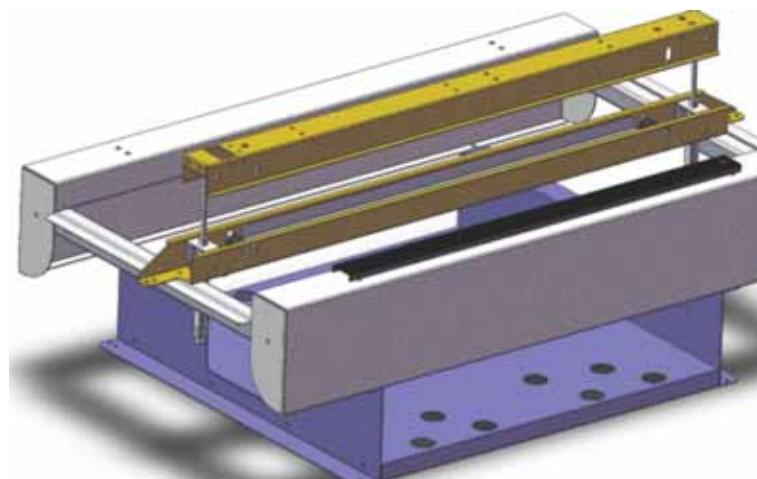
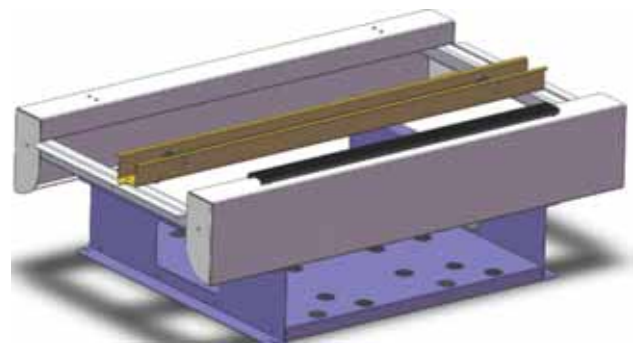
Select Benchtop Mounted or Freestanding

Each Base Frame comes with a shelf to support two power units. This is ideal for positioning on a work surface. Alternatively, a stand with castors is available, making the machine fully portable and also providing a location for all of the power units required for the machine.



Add Hot Wire Heater Beams

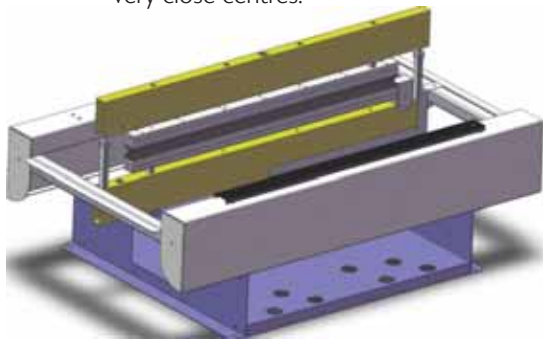
Up to four heating beams can be added to each machine. For thinner materials and low volume fabrication, single sided beams provide a simple solution. Panels to be heated are simply laid onto the heater beam, using the work stop for accurate bend positioning. For thicker materials or faster output, double sided, twin-wire heater beams can be used. With two wires above and two wires below the material, panels up to 12mm in thickness can be processed with ease.



Today's techno

Add Contact Heater Beams

Our temperature controlled contact heating beams heat the material from both sides, giving very quick and efficient heating for a wide variety of materials. High thermal mass beams are used to ensure that the temperature is even all the way along the heater beam, allowing even awkward materials like thin polypropylenes to be folded quickly and easily. Heating blades are available from 2mm to 8mm in width, and custom-made foils can also be supplied, for producing two tight folds at very close centres.



Add Wide Band Heater Beams

Wide band heaters use ceramic emitters to produce larger radius bends, or with the optional sliding table to heat strips of material, for example to manufacture built-up letter wraps. Wide band heater beams can be fitted above or below the material, or on both top and bottom to provide double sided heating for thicker materials.

Heater Beam Power Packs

Power Packs have been specifically developed to match the heater beams for the SF and DF range. Hot wire power packs are fitted with low-voltage toroidal transformers matched to the machine length. For contact heating beams, power packs with dual temperature control are used, ensuring that upper and lower beams are all controlled at exactly the correct temperature. For wide band heater beams, burst-fire control is used to control the heating elements.

Cycle Control

For double sided and contact heating beams, a timer and pneumatic control unit is supplied. As with the heater beam power packs, this unit fits into the base frame of the machine. A unique balanced pressure system is fitted into the control unit, giving smooth operation and almost neutral clamping pressure. This ensures that the contact heating system doesn't mark the materials being processed, and also ensures operator safety.

Putting it All Together

With all of these options, it is easy to specify a machine to your exact needs. All parts are also available separately, enabling systems to be extended and adapted as requirements change.





Unit 3, Betws Industrial Park,
Foundry Road, Ammanford,
Carmarthenshire, SA18 2LS UK

Tel +44(0)1269 590 530

Fax +44(0)1269 590 540

info@crclarke.co.uk

www.crclarke.com

